



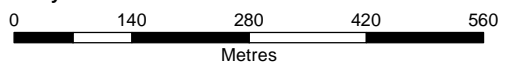
State Planning Policy
 Making or amending a local planning instrument
 and designating land for community infrastructure

Date: 21/05/2024



Queensland Government

© The State of Queensland 2024.



Disclaimer:

This map has been prepared with due care based on the best available information at the time of publication. However, the State of Queensland (acting through the department) makes no representations, either express or implied, that the map is free from errors, inconsistencies or omissions. Reliance on information contained in this map is the sole responsibility of the user. The State disclaims responsibility for any loss, damage or inconvenience caused as a result of reliance on information or data contained in this map.

Legend


Drawn Polygon Layer

Override 1

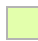
Cadastre (10k)

 Cadastre (10k)


Important agricultural areas

 Important agricultural areas

Stock route network

 Stock route network

Agricultural land classification - class A and B

 Agricultural land classification - class A and B



Queensland Government

© The State of Queensland 2024.

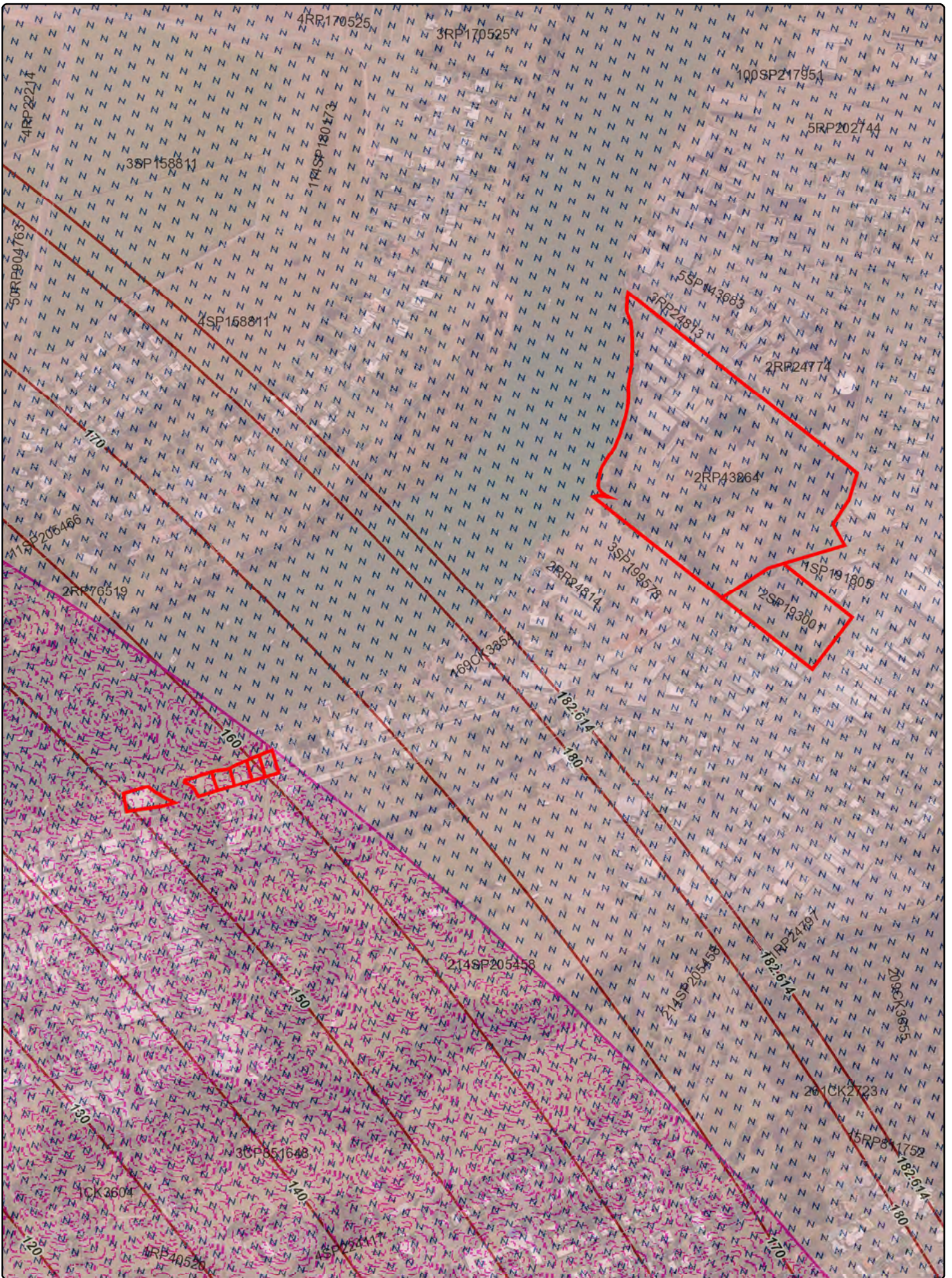
Date: 21/05/2024

State Planning Policy

**Making or amending a local planning instrument
and designating land for community infrastructure**

Disclaimer:

This map has been prepared with due care based on the best available information at the time of publication. However, the State of Queensland (acting through the department) makes no representations, either express or implied, that the map is free from errors, inconsistencies or omissions. Reliance on information contained in this map is the sole responsibility of the user. The State disclaims responsibility for any loss, damage or inconvenience caused as a result of reliance on information or data contained in this map.



State Planning Policy
 Making or amending a local planning instrument
 and designating land for community infrastructure

Date: 21/05/2024



Queensland Government

© The State of Queensland 2024.

0 140 280 420 560

Metres

Disclaimer:

This map has been prepared with due care based on the best available information at the time of publication. However, the State of Queensland (acting through the department) makes no representations, either express or implied, that the map is free from errors, inconsistencies or omissions. Reliance on information contained in this map is the sole responsibility of the user. The State disclaims responsibility for any loss, damage or inconvenience caused as a result of reliance on information or data contained in this map.

Legend

Drawn Polygon Layer

Override 1


Cadastre (10k)

 Cadastre (10k)


Wildlife hazard buffer zone

 3km

 8km

 13km


Lighting area buffer 6km

 Lighting area buffer 6km

Obstacle limitation surface contours

 Obstacle limitation surface contours

Obstacle limitation surface area

 Obstacle limitation surface area



Queensland Government

© The State of Queensland 2024.

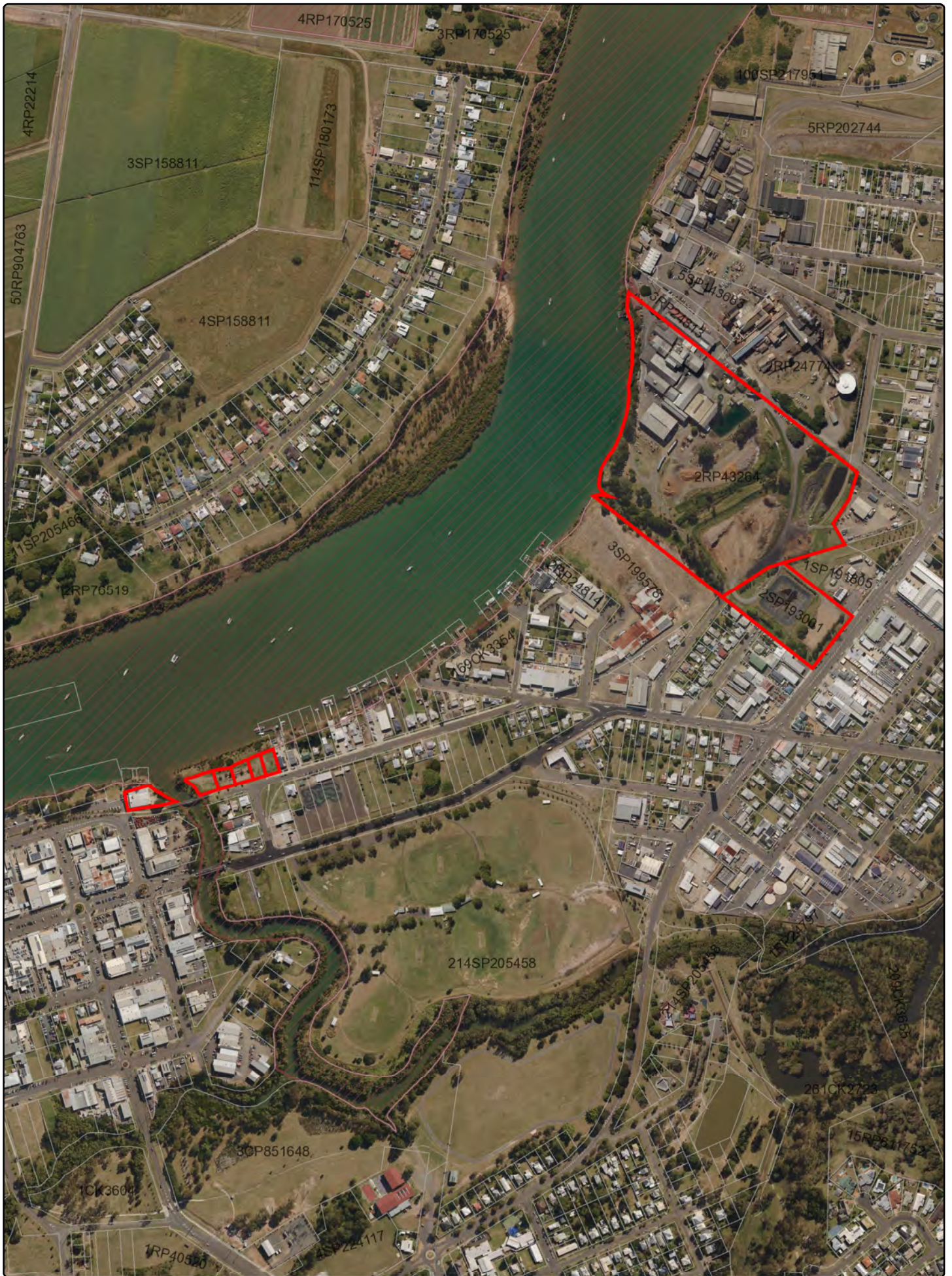
Date: 21/05/2024

State Planning Policy

Making or amending a local planning instrument
and designating land for community infrastructure

Disclaimer:

This map has been prepared with due care based on the best available information at the time of publication. However, the State of Queensland (acting through the department) makes no representations, either express or implied, that the map is free from errors, inconsistencies or omissions. Reliance on information contained in this map is the sole responsibility of the user. The State disclaims responsibility for any loss, damage or inconvenience caused as a result of reliance on information or data contained in this map.



State Planning Policy
 Making or amending a local planning instrument
 and designating land for community infrastructure

Date: 21/05/2024



Queensland Government

© The State of Queensland 2024.

0 140 280 420 560

Metres

Disclaimer:

This map has been prepared with due care based on the best available information at the time of publication. However, the State of Queensland (acting through the department) makes no representations, either express or implied, that the map is free from errors, inconsistencies or omissions. Reliance on information contained in this map is the sole responsibility of the user. The State disclaims responsibility for any loss, damage or inconvenience caused as a result of reliance on information or data contained in this map.

Legend


Drawn Polygon Layer

Override 1

Cadastre (10k)

 Cadastre (10k)

Coastal management district

 Coastal management district



Queensland Government

© The State of Queensland 2024.

Date: 21/05/2024

State Planning Policy

**Making or amending a local planning instrument
and designating land for community infrastructure**

Disclaimer:

This map has been prepared with due care based on the best available information at the time of publication. However, the State of Queensland (acting through the department) makes no representations, either express or implied, that the map is free from errors, inconsistencies or omissions. Reliance on information contained in this map is the sole responsibility of the user. The State disclaims responsibility for any loss, damage or inconvenience caused as a result of reliance on information or data contained in this map.

Legend


Drawn Polygon Layer

Override 1


Cadastre (10k)

 Cadastre (10k)


Erosion prone area

 Erosion prone area


High storm tide inundation area

 High storm tide inundation area


Medium storm tide inundation area

 Medium storm tide inundation area

Flood hazard area - Level 1 - Queensland floodplain assessment overlay

 Flood hazard area - Level 1 - Queensland floodplain assessment overlay

Flood hazard area - local government flood mapping area

 Flood hazard area - local government flood mapping area



Queensland Government

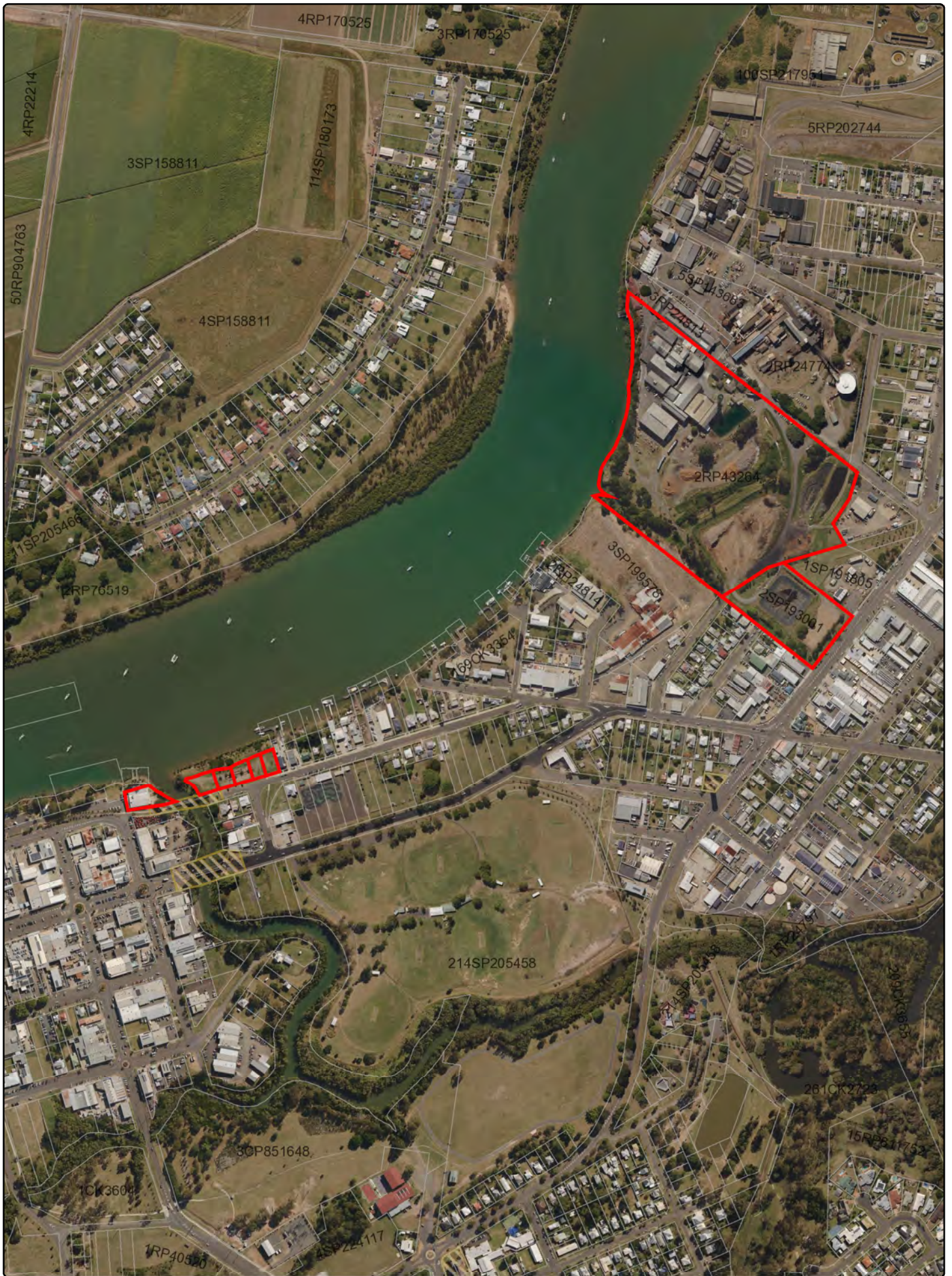
© The State of Queensland 2024.

Date: 21/05/2024

State Planning Policy Making or amending a local planning instrument and designating land for community infrastructure

Disclaimer:

This map has been prepared with due care based on the best available information at the time of publication. However, the State of Queensland (acting through the department) makes no representations, either express or implied, that the map is free from errors, inconsistencies or omissions. Reliance on information contained in this map is the sole responsibility of the user. The State disclaims responsibility for any loss, damage or inconvenience caused as a result of reliance on information or data contained in this map.

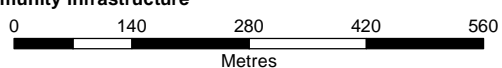


State Planning Policy
 Making or amending a local planning instrument
 and designating land for community infrastructure

Date: 21/05/2024



Queensland Government
 © The State of Queensland 2024.



Disclaimer:
 This map has been prepared with due care based on the best available information at the time of publication. However, the State of Queensland (acting through the department) makes no representations, either express or implied, that the map is free from errors, inconsistencies or omissions. Reliance on information contained in this map is the sole responsibility of the user. The State disclaims responsibility for any loss, damage or inconvenience caused as a result of reliance on information or data contained in this map.

Legend


Drawn Polygon Layer

Override 1


Cadastre (10k)

 Cadastre (10k)

State heritage place

 State heritage place

National heritage place

 National heritage place



Queensland Government

© The State of Queensland 2024.

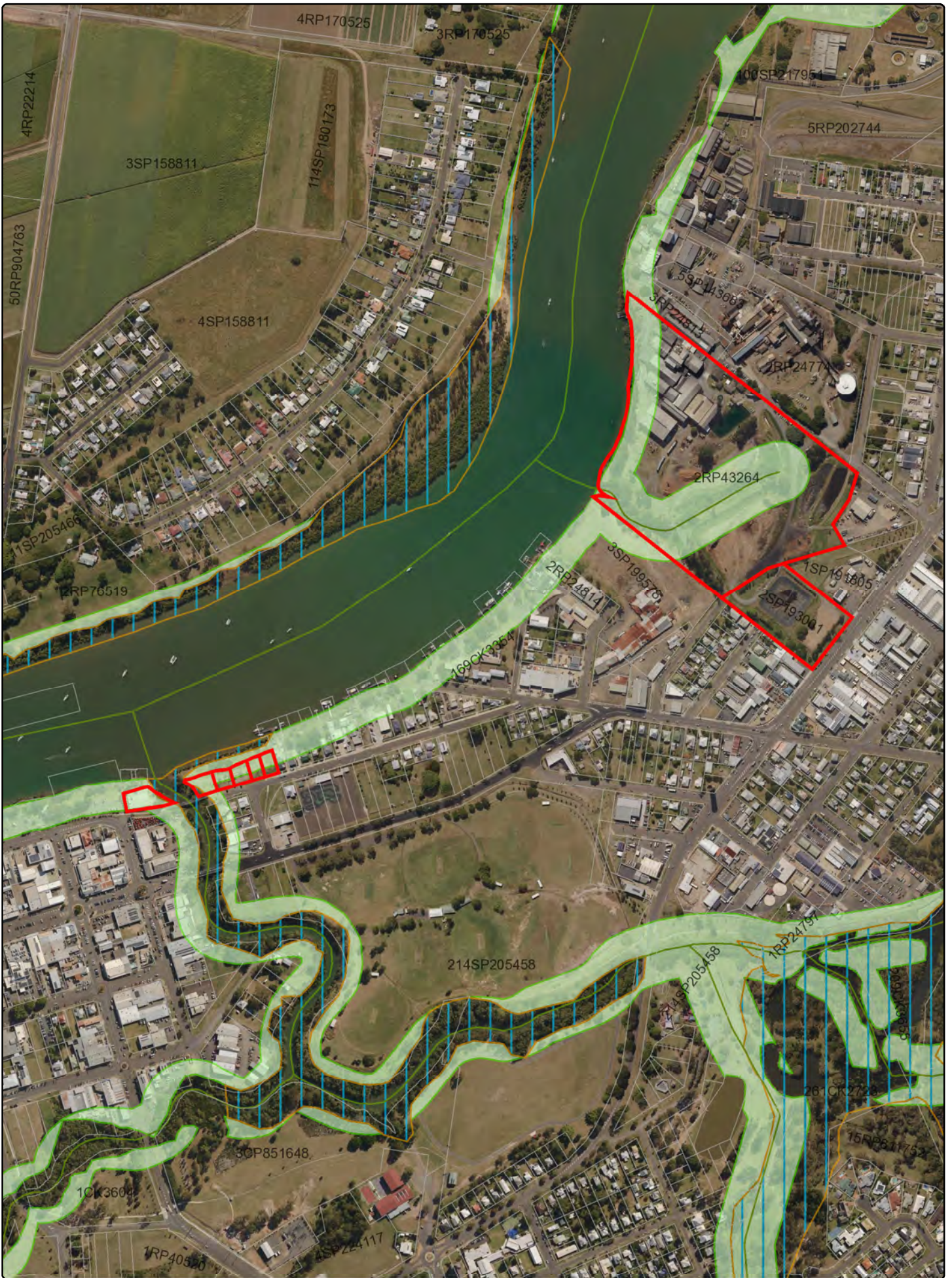
Date: 21/05/2024

State Planning Policy

**Making or amending a local planning instrument
and designating land for community infrastructure**

Disclaimer:

This map has been prepared with due care based on the best available information at the time of publication. However, the State of Queensland (acting through the department) makes no representations, either express or implied, that the map is free from errors, inconsistencies or omissions. Reliance on information contained in this map is the sole responsibility of the user. The State disclaims responsibility for any loss, damage or inconvenience caused as a result of reliance on information or data contained in this map.



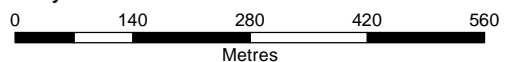
State Planning Policy
 Making or amending a local planning instrument
 and designating land for community infrastructure

Date: 21/05/2024



Queensland Government

© The State of Queensland 2024.



Disclaimer:

This map has been prepared with due care based on the best available information at the time of publication. However, the State of Queensland (acting through the department) makes no representations, either express or implied, that the map is free from errors, inconsistencies or omissions. Reliance on information contained in this map is the sole responsibility of the user. The State disclaims responsibility for any loss, damage or inconvenience caused as a result of reliance on information or data contained in this map.

Legend


Drawn Polygon Layer

Override 1


Cadastre (10k)

 Cadastre (10k)


MSES - Regulated vegetation (intersecting a watercourse)

 MSES - Regulated vegetation (intersecting a watercourse)


MSES - Wildlife habitat (special least concern animal)

 MSES - Wildlife habitat (special least concern animal)


MSES - Legally secured offset area (offset register)

 MSES - Legally secured offset area (offset register)

MSES - Legally secured offset area (regulated vegetation offsets)

 MSES - Legally secured offset area (regulated vegetation offsets)

MSES - Regulated vegetation (category R)

 MSES - Regulated vegetation (category R)



Queensland Government

© The State of Queensland 2024.

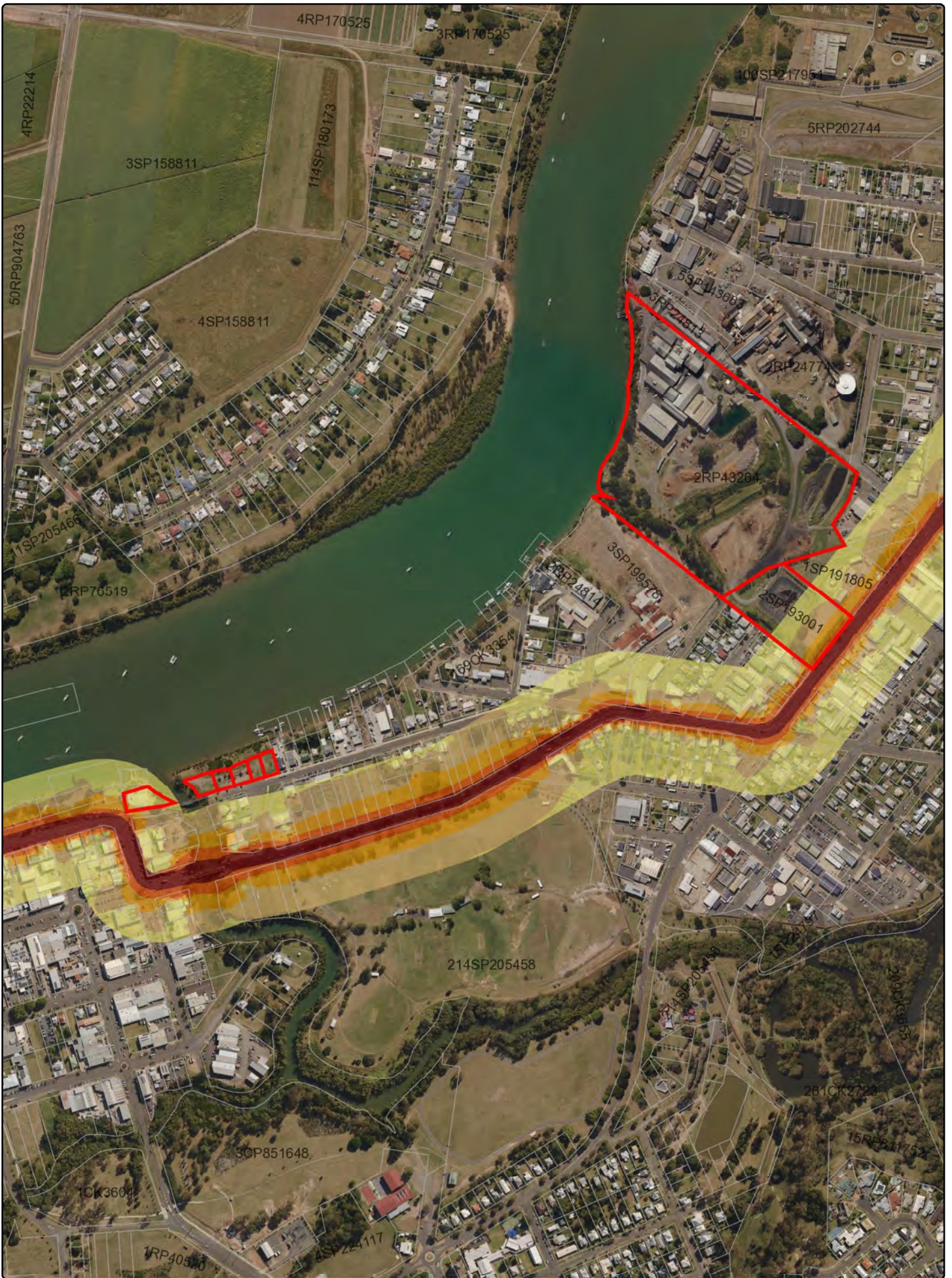
Date: 21/05/2024

State Planning Policy

Making or amending a local planning instrument
and designating land for community infrastructure

Disclaimer:

This map has been prepared with due care based on the best available information at the time of publication. However, the State of Queensland (acting through the department) makes no representations, either express or implied, that the map is free from errors, inconsistencies or omissions. Reliance on information contained in this map is the sole responsibility of the user. The State disclaims responsibility for any loss, damage or inconvenience caused as a result of reliance on information or data contained in this map.



State Planning Policy
 Making or amending a local planning instrument
 and designating land for community infrastructure

Date: 21/05/2024



Queensland Government

© The State of Queensland 2024.

0 140 280 420 560

Metres

Disclaimer:

This map has been prepared with due care based on the best available information at the time of publication. However, the State of Queensland (acting through the department) makes no representations, either express or implied, that the map is free from errors, inconsistencies or omissions. Reliance on information contained in this map is the sole responsibility of the user. The State disclaims responsibility for any loss, damage or inconvenience caused as a result of reliance on information or data contained in this map.

Legend






Drawn Polygon Layer

Override 1

Cadastre (10k)

 Cadastre (10k)

Noise corridor - State-controlled road (MANDATORY area)

-  Category 0: Noise Level < 58 dB(A)
-  Category 1: 58 dB(A) =< Noise Level < 63 dB(A)
-  Category 2: 63 dB(A) =< Noise Level < 68 dB(A)
-  Category 3: 68 dB(A) =< Noise Level < 73 dB(A)
-  Category 4: Noise Level >= 73 dB(A)



Queensland Government

© The State of Queensland 2024.

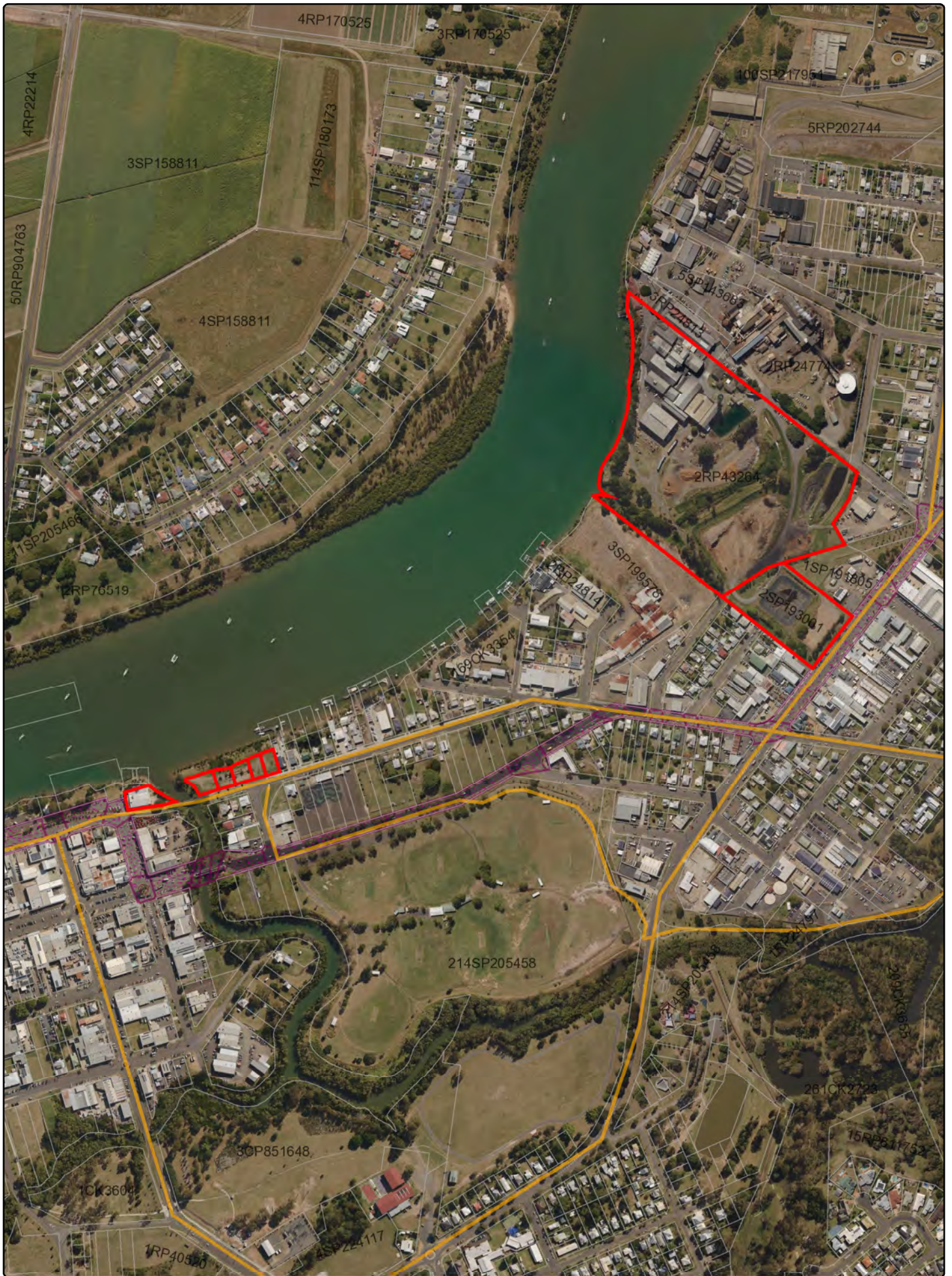
Date: 21/05/2024

State Planning Policy

**Making or amending a local planning instrument
and designating land for community infrastructure**

Disclaimer:

This map has been prepared with due care based on the best available information at the time of publication. However, the State of Queensland (acting through the department) makes no representations, either express or implied, that the map is free from errors, inconsistencies or omissions. Reliance on information contained in this map is the sole responsibility of the user. The State disclaims responsibility for any loss, damage or inconvenience caused as a result of reliance on information or data contained in this map.



State Planning Policy
 Making or amending a local planning instrument
 and designating land for community infrastructure

Date: 21/05/2024

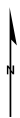


Queensland Government

© The State of Queensland 2024.

0 140 280 420 560

Metres



Disclaimer:

This map has been prepared with due care based on the best available information at the time of publication. However, the State of Queensland (acting through the department) makes no representations, either express or implied, that the map is free from errors, inconsistencies or omissions. Reliance on information contained in this map is the sole responsibility of the user. The State disclaims responsibility for any loss, damage or inconvenience caused as a result of reliance on information or data contained in this map.

Legend


Drawn Polygon Layer

Override 1

Cadastre (10k)

 Cadastre (10k)

Active transport corridor

 Active transport corridor

State-controlled road

 State-controlled road



Date: 21/05/2024

Queensland Government

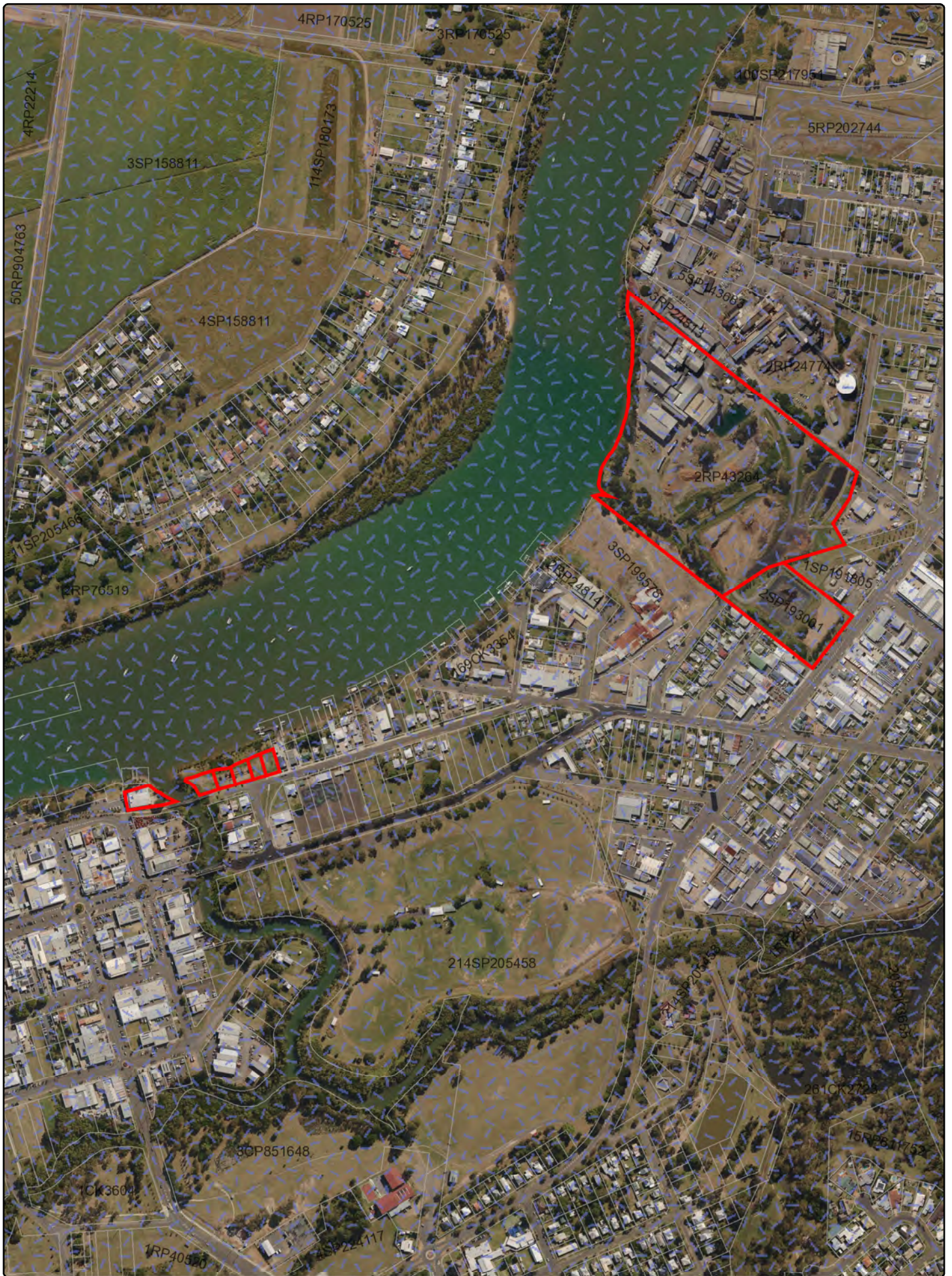
© The State of Queensland 2024.

State Planning Policy

**Making or amending a local planning instrument
and designating land for community infrastructure**

Disclaimer:

This map has been prepared with due care based on the best available information at the time of publication. However, the State of Queensland (acting through the department) makes no representations, either express or implied, that the map is free from errors, inconsistencies or omissions. Reliance on information contained in this map is the sole responsibility of the user. The State disclaims responsibility for any loss, damage or inconvenience caused as a result of reliance on information or data contained in this map.

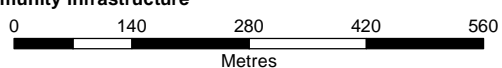


State Planning Policy
 Making or amending a local planning instrument
 and designating land for community infrastructure

Date: 21/05/2024



Queensland Government
 © The State of Queensland 2024.



Disclaimer:
 This map has been prepared with due care based on the best available information at the time of publication. However, the State of Queensland (acting through the department) makes no representations, either express or implied, that the map is free from errors, inconsistencies or omissions. Reliance on information contained in this map is the sole responsibility of the user. The State disclaims responsibility for any loss, damage or inconvenience caused as a result of reliance on information or data contained in this map.

Legend


Drawn Polygon Layer

Override 1


Cadastre (10k)

 Cadastre (10k)


Slightly disturbed waters

 Slightly disturbed waters

Climatic regions - stormwater management design objectives

 Climatic regions - stormwater management design objectives

Urban water supply storage

 Urban water supply storage



Queensland Government

© The State of Queensland 2024.

Date: 21/05/2024

State Planning Policy

**Making or amending a local planning instrument
and designating land for community infrastructure**

Disclaimer:

This map has been prepared with due care based on the best available information at the time of publication. However, the State of Queensland (acting through the department) makes no representations, either express or implied, that the map is free from errors, inconsistencies or omissions. Reliance on information contained in this map is the sole responsibility of the user. The State disclaims responsibility for any loss, damage or inconvenience caused as a result of reliance on information or data contained in this map.